

MANUAL CONFIGURATION OF RX8200 SETTINGS

Manual Configuration of the RX8200 to lock to RLS and WNE. The screen shot examples below show a different default management IP address. Please ensure you are using a 172.16.2.20 IP address for Control 2 management interface.

Please also note that the following screen shots may not be identical to the RX8200 unit to hand as different firmware versions of the unit have additional menu options.

Configuration of the RLS Service parameters must be configured first.. Select the **Input** tab on the RX8200 browser interface

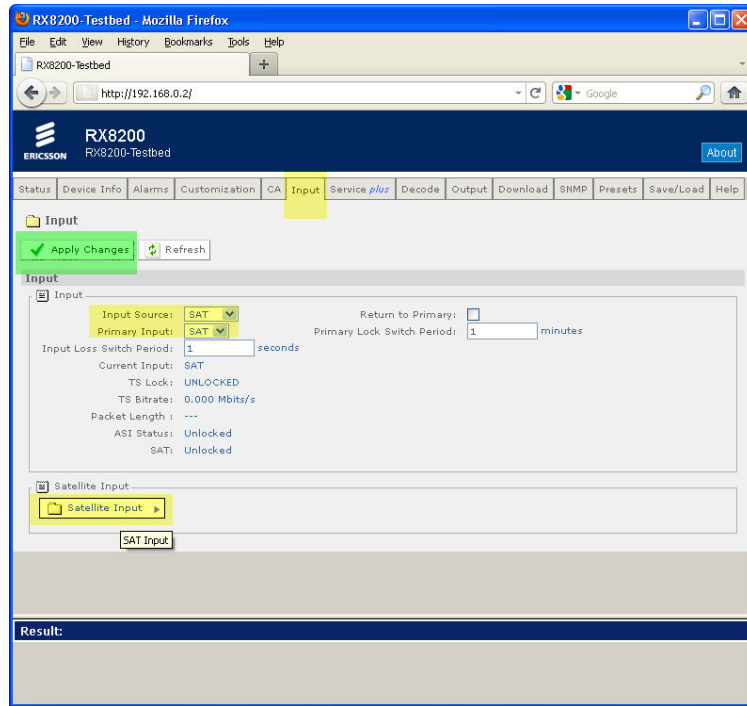


Figure 1. Satellite Input

Select the *Satellite Input* tab at the bottom of the browser page. You will now see a list of the L-band inputs. The RF signal from the satellite dish should be connected to Input 1 as shown in section 2.2 of this document.

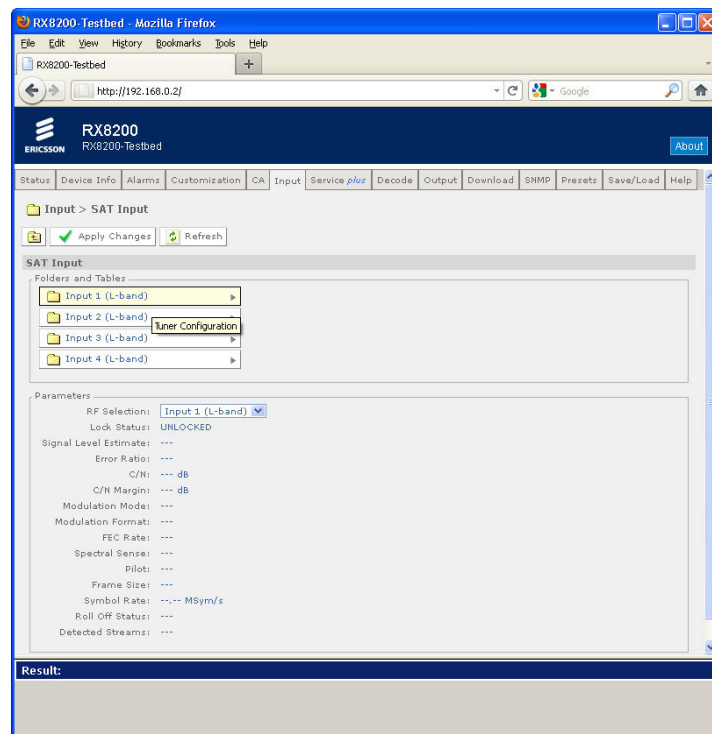


Figure 2. Satellite Input Screen

Configure the satellite input parameters for the client site. Please use the Global Satellite Coverage options in this document to determine the local settings required for your client region. Ask a client engineering representative for the frequency details of the LNB connected to their in-house satellite dish.

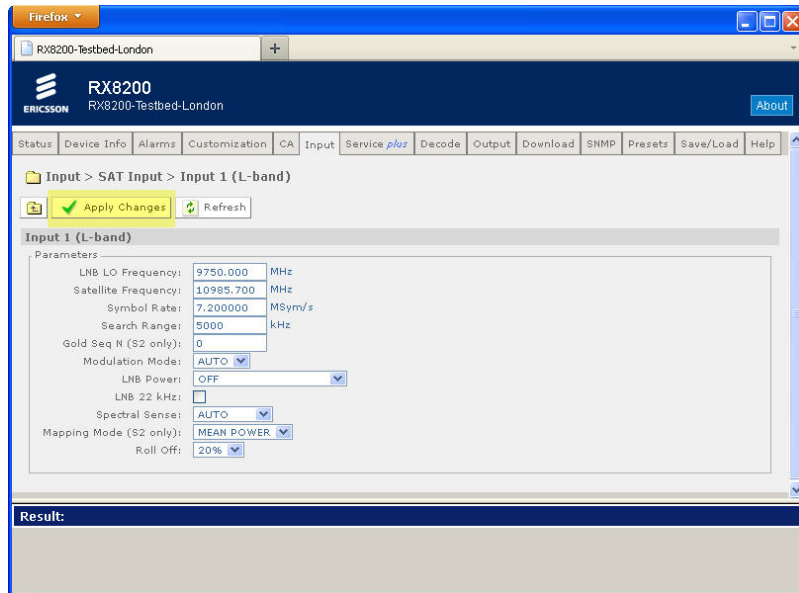


Figure 3. L-band Input 1 Configuration

When all the configuration parameters have been entered click on the *Apply Changes* tab to ensure the settings are saved. The receiver should now be tuned into the RLS service and the Front Panel LED of the RX8200 should have changed to an Orange colour. This will also be reflected on the home Status page of the receiver.

For WNE, two multicast IP addresses exist to distinguish between PAL/625 and NTSC/525 on Reuters WNE (i.e.), each broadcast stream exists on a separate multicast address.

These addresses are provided below:

Standard	IP Address	MAC Address Hexadecimal
525/HD60	224.14.14.14	01:00:5E:0E:0E:0E
625/HD50	224.14.14.15	01:00:5E:0E:0E:0F

Figure 4. Multicast Addresses on WNE

To configure the transmission standard specific to your region, navigate to the *Decode* tab of the RX receiver browser page.

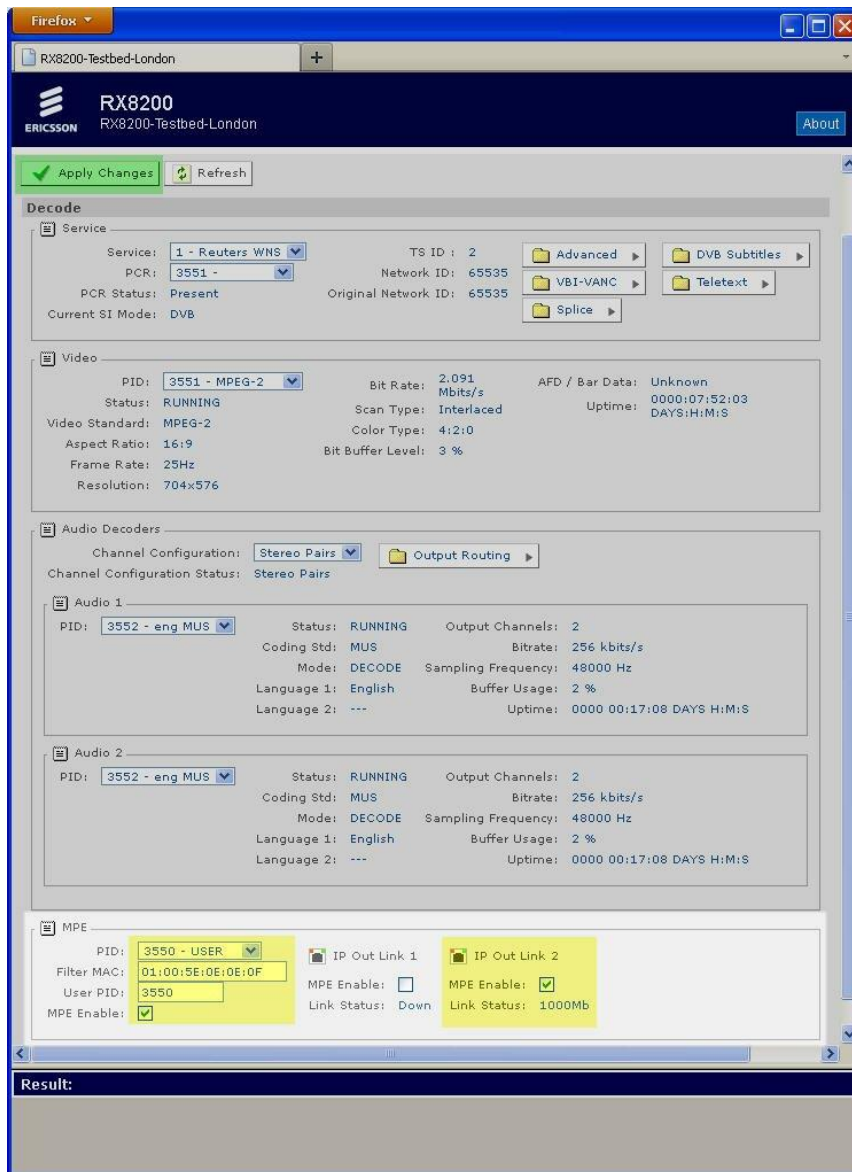


Figure 5. Configuring Multicast MAC Address and PID

Within the **MPE** section, make sure the following information is included:

- *PID*: – From the drop down tab, the PID 3550 – USER should be available once the receiver is tuned into RLS. If not then it will appear after the User PID has been selected and the changes applied to the receivers configuration.
- *Filter MAC*: - Enter the MAC address as shown in **Multicast Address** graphic above for your region.
- *User PID*: - 3550
- *MPE Enable*: - Select this box.
- Also ensure that the *MPE Enable* tick box is enabled for **IP Out Link 2** and then click **Apply Changes** to store this configuration.

To change the IP Output 2 address select the *Output* tab. As this network Interface directly connects to the WNE Server the IP address convention used globally is 172.16.2.2.

Ensure the *Tx Enable* tab remains deselected. A tick mark should not be displayed in the Tx Enable box as shown in the graphic below.

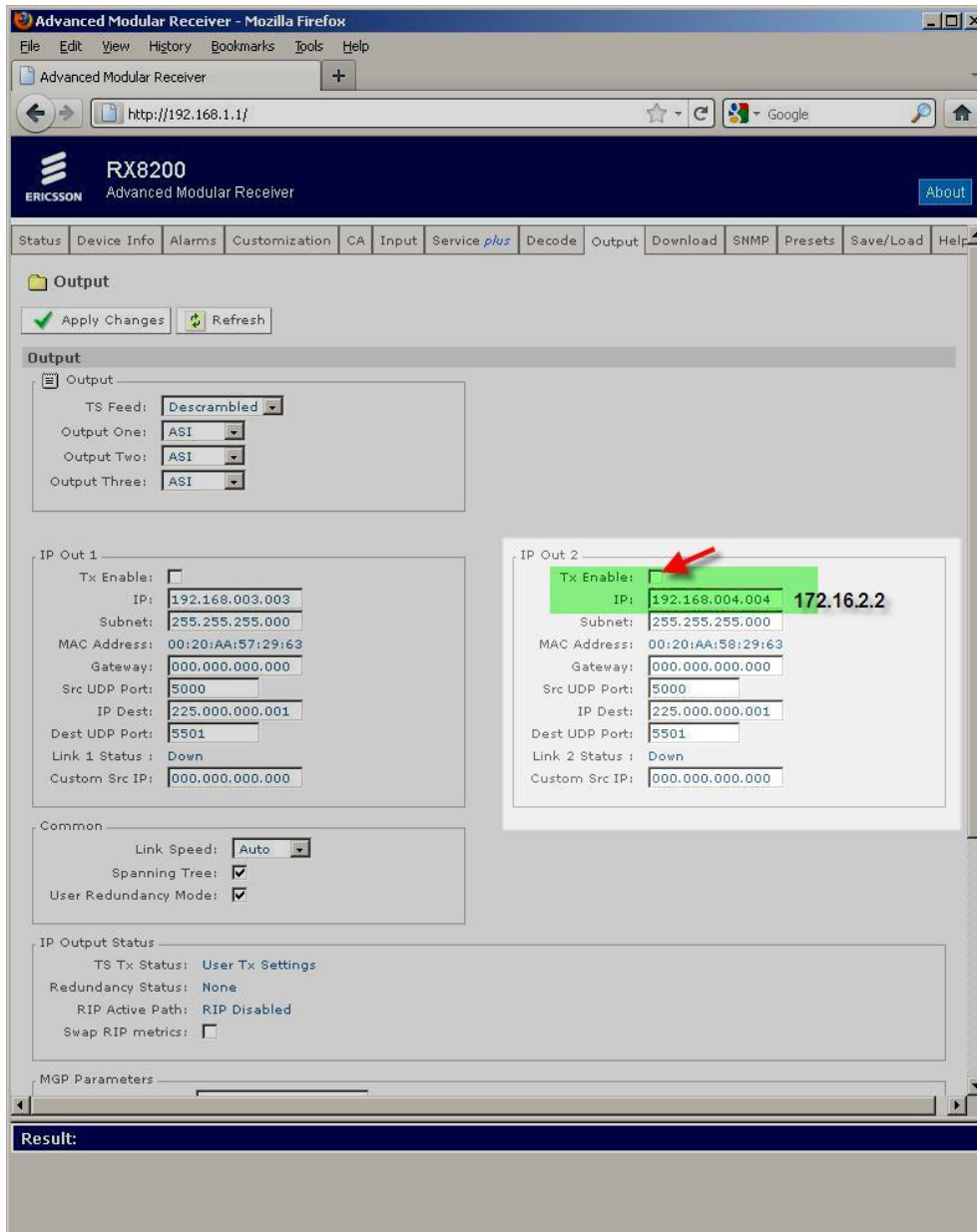


Figure 6. IP Output Interface 2 – Default Settings Shown

Once the IP address has been changed, ensure to select *Apply Changes* to store this new IP address.

The receiver should now be correctly configured for RLS and WNE IP data.