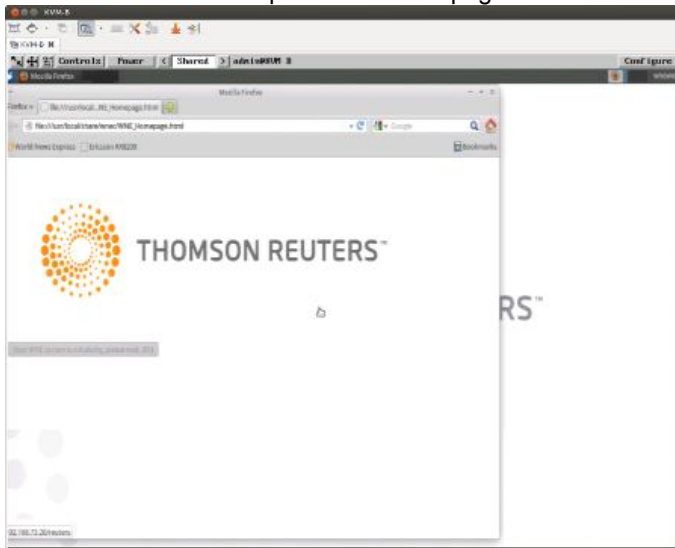


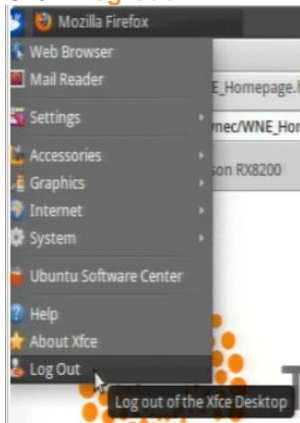
1. Connect up a keyboard, mouse and monitor and power up the WNE Appliance.
2. The machine will start up and the home page as shown below will appear within a few minutes.



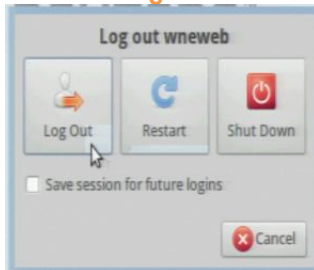
3. Click the small blue and white button in the top left corner (the "Application Menu" button).



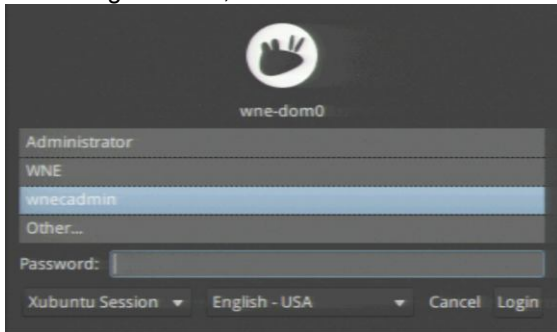
4. Click "Log Out"



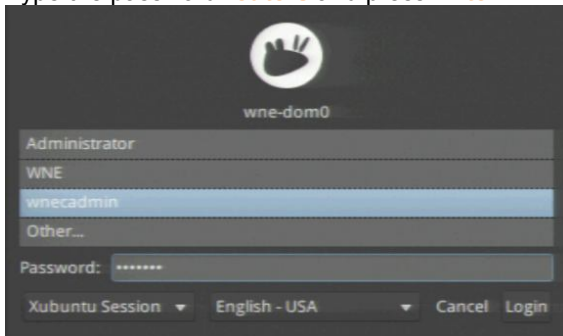
5. Click the "Log Out" button on the dialogue that appears.



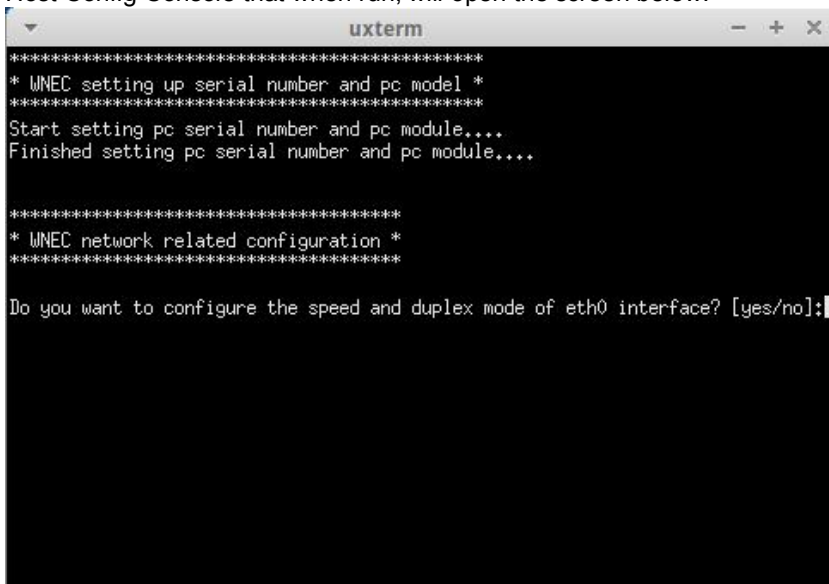
6. On the login screen, click “*wneadmin*”



7. Type the password *routers* and press **Enter**.

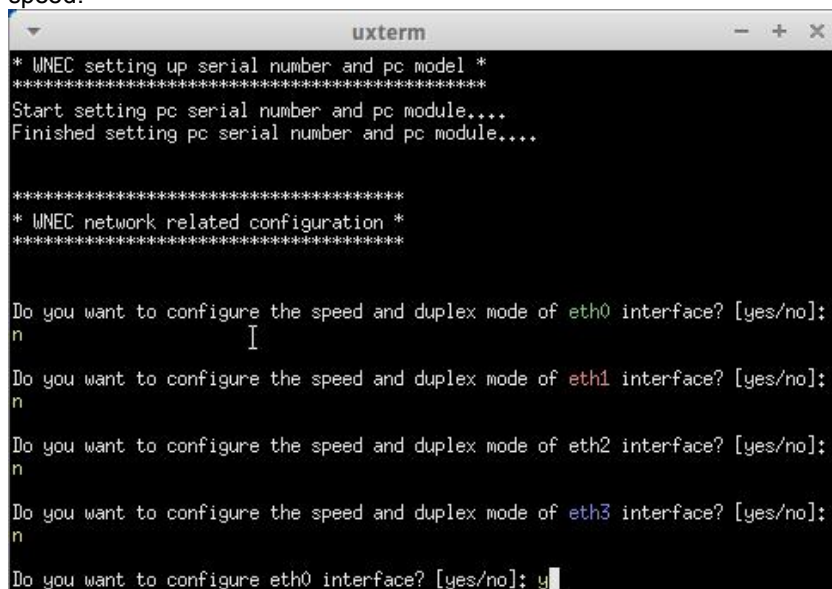


8. The maintenance desktop appears and the network configuration script shortcut should automatically open a terminal emulator window. If this window doesn't automatically appear there is a desktop shortcut called Host Config Console that when run, will open the screen below.



9. You are now prompted to configure the speed and duplex of each of the network interfaces on the WNEC Appliance. Unless a fixed speed and duplex is required for each interface, leave the setting as default (auto) by selecting No for each network interface. All interfaces will remain with an automatic network

speed.



```
uxterm
* WNEC setting up serial number and pc model *
*****
Start setting pc serial number and pc module...
Finished setting pc serial number and pc module...

*****
* WNEC network related configuration *
*****

Do you want to configure the speed and duplex mode of eth0 interface? [yes/no]:
n

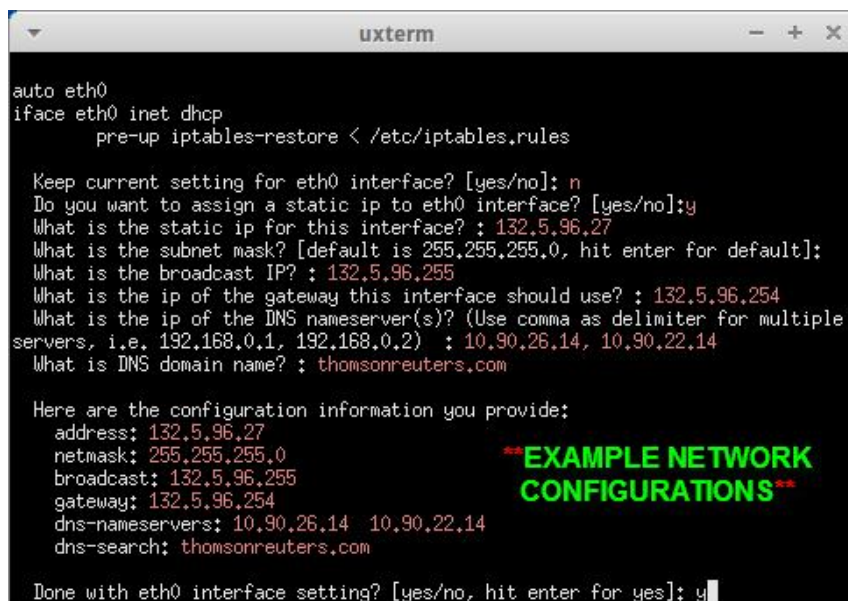
Do you want to configure the speed and duplex mode of eth1 interface? [yes/no]:
n

Do you want to configure the speed and duplex mode of eth2 interface? [yes/no]:
n

Do you want to configure the speed and duplex mode of eth3 interface? [yes/no]:
n

Do you want to configure eth0 interface? [yes/no]: y
```

10. *eth0* should always be the dedicated connection for a customers network. This network connection will need to be configured and you will be prompted with “Do you want to configure *eth0* interface?” Select **Y** to proceed.
11. The script will display the current network setting and ask if you wish to change these setting.
12. Enter addresses for static IP, subnet mask, broadcast, gateway and DNS addresses and DNS Domain Name if available. Alternatively the addresses for this interface can also be assigned on the customer network by DHCP if present on this network. When these credentials have been entered you will be asked if you are done configuring this interface. Select **Y** to continue or **N** to return to configure this interface again. (TIP: [http://www.subnet-calculator.com/subnet.php?net\\_class=A](http://www.subnet-calculator.com/subnet.php?net_class=A) for help in calculating subnet mask)



```
uxterm

auto eth0
iface eth0 inet dhcp
    pre-up iptables-restore < /etc/iptables.rules

Keep current setting for eth0 interface? [yes/no]: n
Do you want to assign a static ip to eth0 interface? [yes/no]:y
What is the static ip for this interface? : 132.5.96.27
What is the subnet mask? [default is 255,255,255,0, hit enter for default]:
What is the broadcast IP? : 132.5.96.255
What is the ip of the gateway this interface should use? : 132.5.96.254
What is the ip of the DNS nameserver(s)? (Use comma as delimiter for multiple
servers, i.e. 192.168.0.1, 192.168.0.2) : 10.90.26.14, 10.90.22.14
What is DNS domain name? : thomsonreuters.com

Here are the configuration information you provide:
address: 132.5.96.27
netmask: 255.255.255.0
broadcast: 132.5.96.255
gateway: 132.5.96.254
dns-nameservers: 10.90.26.14 10.90.22.14
dns-search: thomsonreuters.com

Done with eth0 interface setting? [yes/no, hit enter for yes]: y
```

13. “Done with *eth0* interface setting?” Select **Y** to confirm the settings.
14. If this is a single dedicated WNE Appliance connected directly to an RX8200 satellite receiver then no other network interfaces should need to be configured. If more than one WNE Appliance is being configured then please see [Appendix 4](#) for an overview addressing suggestions.
15. You will also be prompted for a change to *eth1*, *eth2* and *eth3* if applicable. The prompt for *eth2* is to leave it configured as default for Reuters Support. Under this single WNE Appliance connection, *eth1* and *eth3* should remain unchanged.

```
uxterm
Do you want to configure eth1 interface? [yes/no]: n
Do you want to leave eth2 port configured as default for Reuters Onsite Support?
[yes/no]: y
Do you want to configure eth3 interface? [yes/no]: n
Configure eth0 setting
No change to current eth1 setting
No change to current eth2 setting
No change to current eth3 setting
... Restarting network service with new setting, please wait
* Running /etc/init.d/networking restart is deprecated because it may not enable
again some interfaces
* Reconfiguring network interfaces...
```

16. You will be asked for a proxy address and whether the proxy requires any login credentials.

```
uxterm
Is proxy needed for accessing internet? [yes/no]: y
Setting up the proxy information
Current proxy setting is as below:
http://10.1.51.10:80
What is the ip or domain name of the proxy? : 10.1.51.10
Which proxy port number should be used? [default is 80]:
Login credentials required for proxy request? [yes/no, default is no]: n
Update proxy setting using [10.1.51.10] with port [80]
Proceed to set proxy up? [yes/no]: y
```

17. Once this is complete some Web Services will be restarted. At the end of this restart process a prompt to enter an NTP (Network Time Protocol) address for clock synchronisation will be presented. If the customer has a preferred address please use that one, otherwise a default NTP option will be used.

```
Do you want to use your own NTP Network Time Server? [yes/no]: y
Please type in your NTP server domain name? [e.g. ubuntu.pool.ntp.org]: 132.5.
37.241
more NTP server to add? [yes/no]: n EXAMPLE
Below shows the list of NTP server(s) you just input
132.5.37.241
Proceed to configure the NTP service with above server(s)? [yes/no]: y
```

18. Once the NTP address has been entered the network configuration is completed.
19. Reboot the entire machine by selecting reboot after clicking on the top right corner marked "wnecadmin"
20. Once the machine has booted up, log out as per step 3, and then login to the *wnec-windows* Administrator guest account using the password of **wne**.